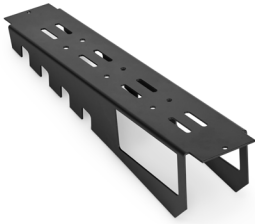


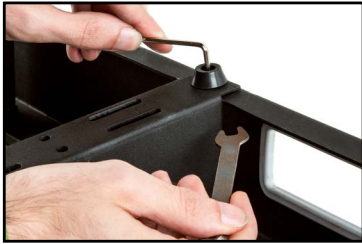


# Installation Manual for RockBoard® Frame XL Mounting Brace for large Multi-Power Supplies English

Thank you for choosing a **RockBoard®** Frame XL! The Frame XL is an optional replacement brace for the **RockBoard®** Cinque 5.2, 5.3 & 5.4 pedalboards, which allows you to mount even larger and wider multi-power supplies without sacrificing the stability of your board.



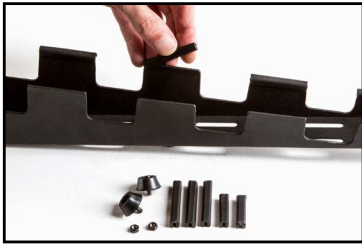
## Mounting



**Step 1**  
Only the included tools are required to mount the **RockBoard®** Frame XL. First remove one of the standard support braces on your **RockBoard®** pedalboard. To do this, loosen both screws on the rubber feet



**Step 2**  
Once both screws have been loosened, you can simply remove the support brace.



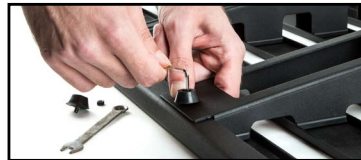
**Step 3**  
Now remove the rubber shock absorber from the standard support brace and keep them ready for assembly on the **RockBoard®** Frame XL. The previously disassembled rubber feet and screws can also be used for mounting the **RockBoard®** Frame XL.



**Step 4**  
Now place the rubber shock absorber on the matching support pads of the **RockBoard®** Frame XL.



**Step 5**  
Place the Frame XL into your **RockBoard®** pedalboard.



**Step 6**  
Now screw the **RockBoard®** Frame XL to the **RockBoard®** pedalboard. Use the included wrench to position the nut. Your **RockBoard®** Frame XL is now completely mounted.



**Mounting of two RockBoard® Frame XL**  
You also have the option to install two **RockBoard®** Frame XL, to do this simply repeat the steps described above.



**Mounting a RockBoard® The Tray**  
If you also have a **RockBoard®** The Tray, you can now attach it as well, as described in the associated manual.



Note: The manufacturer reserves the right to change these specifications without notice.